

ROOM CATALOGUE

THE FIVES DOWNTOWN - PLAYA DEL CARMEN

The Fives
DOWNTOWN HOTEL & RESIDENCES
PLAYA DEL CARMEN
CURIO COLLECTION BY HILTON

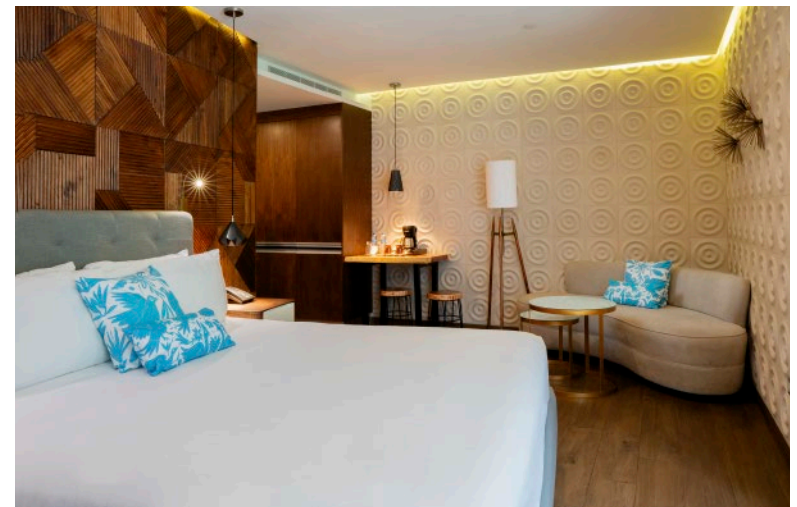
SINGULAR ROOM

DELUXE

Lose yourself in the comfort of our Deluxe Suites. This spacious 388 sq ft. room is equipped with a King size bed, a double sofa bed, and a practical coffee table. In it, you can let yourself be carried away in a whirlpool of elegance and comfort, where every corner is an invitation to intimacy and complicity. It has a bathroom with a double sink that will become a reflection of shared moments, it also has a kitchen equipped with a stove, microwave, and a small refrigerator that will give you the platform to create banquets worthy of admiration. In this complete picture of luxury and pleasure, even the television becomes a canvas for your dreams. Some of these rooms have a balcony that will allow you to appreciate the beautiful gardens of the hotel.

MAX OCCUPANCY: 2 PAX (MAX 2 ADULTS | MAX 2 CHILDREN)

*Restrictions Apply

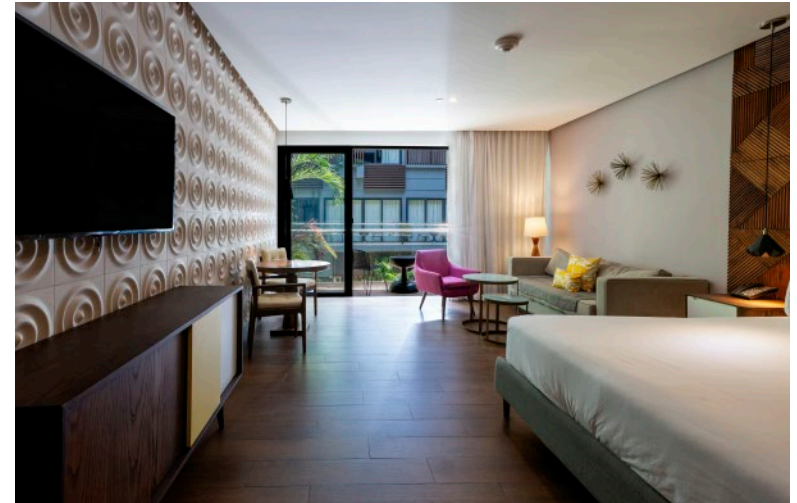
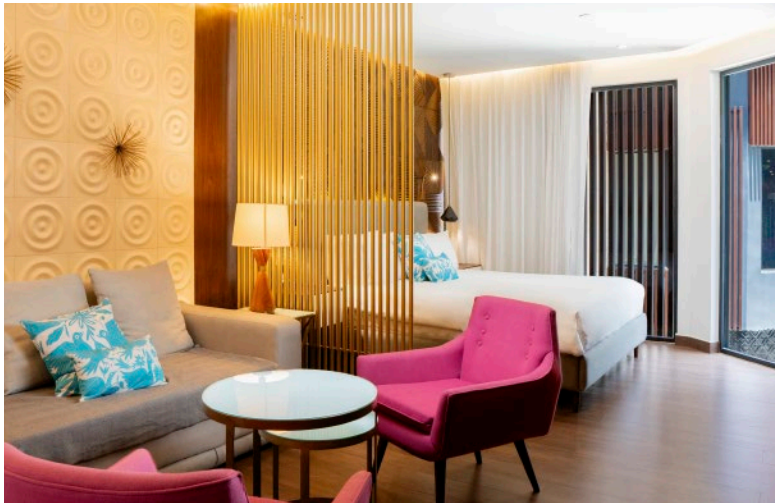


JUNIOR SUITE

By staying in this suite, you can enter a dreamy retreat where time fades in every corner. In our Junior Suites, the path to total relaxation is paved with a view of the vertical gardens of the inner courtyard, a natural landscape that caresses your senses. Inside the room, you will find a King-size bed, a living room with a double sofa bed, a coffee table, and a pair of single armchairs, with desk-type furniture accompanied by two chairs that invite you to put your ideas on paper. These suites have a kitchen equipped with a stove, microwave, coffee maker, and a small refrigerator. At the end of the day, the bathroom with all the comforts and double sink will give you a corner of care and affection that you have been looking for, all in an area of 420 sq ft.

MAX OCCUPANCY: 4 PAX (MAX 3 ADULTS | MAX 2 CHILDREN)

*Restrictions Apply



SUPERIOR

Feel how every corner comes alive in our Superior Rooms category, from where your eyes will witness the view of the vertical gardens of the inner courtyard. This room will become a retreat of absolute well-being, where the days will pass between the softness of the King-size sheets in your room, while the double sofa bed will become an invitation to share intimate moments in a space of 463 sq ft. where you will also find a table with two chairs and a single armchair. The kitchen, with its refrigerator and a stove, becomes a corner of culinary creativity where flavors become poetry. Its full bathroom is a temple of indulgence where you can pamper your body with a revitalizing bath that will prepare you for the adventures you will live during the day.

MAX OCCUPANCY: 4 PAX (MAX 3 ADULTS | MAX 2 CHILDREN)

*Restrictions Apply

ONE-BEDROOM RESIDENCE

Prepare to discover the zenith of luxury and exclusivity in our one-bedroom residences, an experience that redefines comfort at The Fives Downtown. Here, you will have access to a private bedroom with a King-size bed, a bathroom with double sinks, and all the amenities you need framed with elegant finishes. Through the thin wooden sliding doors that go from the floor to the ceiling, you enter the spacious living room with a double sofa bed, a dining area, and two single armchairs, where you can spend pleasant moments with your guests. In the kitchen, the coffee maker and the bar are the instruments of your culinary creations, and the refrigerator, oven, stove, and microwave are the palettes of your tastes. Prepare to be part of an experience that goes beyond words in a 527 sq ft. space.

MAX OCCUPANCY: 4 PAX (MAX 3 ADULTS | MAX 2 CHILDREN)

*Restrictions Apply



ONE-BEDROOM OCEANVIEW RESIDENCE

This dreamy corner has all the splendor of our **ONE-BEDROOM RESIDENCES** and more, because it has a secret treasure: a partial view of the Caribbean Sea from a private terrace that becomes a portal to serenity. Every detail has been carefully considered to make your stay an unforgettable experience. From the views that caress your soul to the aromas that envelop your senses, every moment in this 538 sq ft. residence is a testament to the luxury you deserve.

MAX OCCUPANCY: 4 PAX (MAX 3 ADULTS | MAX 2 CHILDREN)

*Restrictions Apply

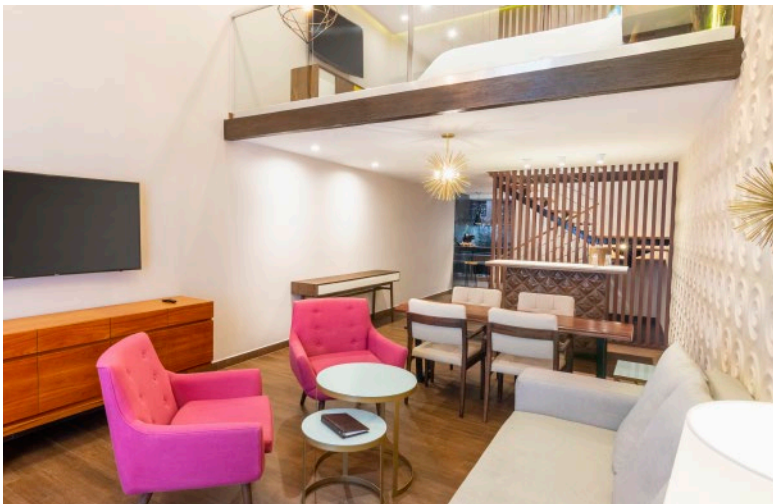
ONE BEDROOM RESIDENCES

ONE-BEDROOM LOFT RESIDENCE

An experience beyond the ordinary awaits you in this 969 sq ft. suite. The master bedroom is located on a mezzanine on the second level and features a king-size bed and a full bathroom with double sinks, all separated by an elegant glass wall. From here you can see the main living area downstairs, which has a dining room and a living room with a double sofa bed, the only thing you have to do to access this area is to go down the wooden stairs. Downstairs you will have access to the kitchen, which is fully equipped with a refrigerator, coffee maker, oven, stove, and microwave. This area also has a half bathroom for your convenience.

MAX OCCUPANCY: 4 PAX (MAX 3 ADULTS | MAX 2 CHILDREN)

*Restrictions Apply



THE FIVES DOWNTOWN - PLAYA DEL CARMEN

TWO BEDROOMS RESIDENCES



ONE-BEDROOM WHIRPOOL RESIDENCE

This is one of the warmest suites in the resort, and in addition to all the benefits of the **One-Bedroom Resort Residence**, this 969 sq ft. space offers the great possibility of having a fully furnished balcony that becomes a secret corner of exclusivity, with a Jacuzzi tub where you can relax in depth while enjoying the views of Playa del Carmen. Vibrantly colored furnishings create a sanctuary of charm. In our ONE-BEDROOM WHIRPOOL RESIDENCE, time becomes a blank canvas, and every moment is a masterpiece of relaxation and romance. Prepare to lose yourself in this sublime oasis of enchantment.

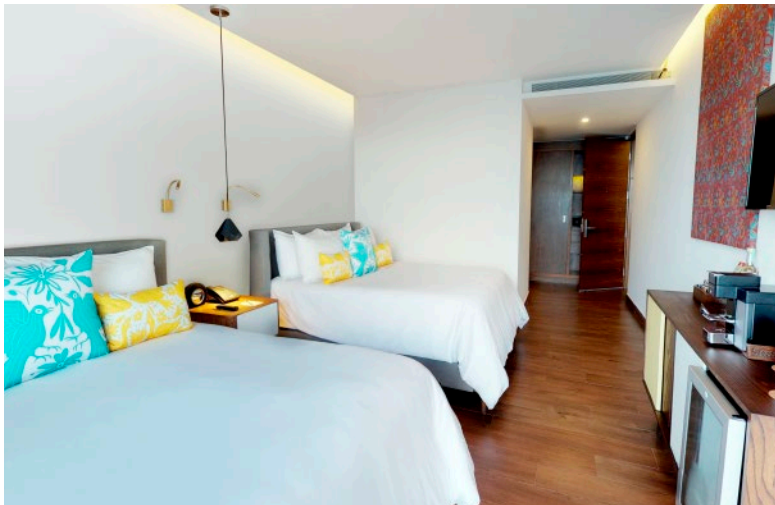
MAX OCCUPANCY: 4 PAX (MAX 3 ADULTS | MAX 2 CHILDREN)

*Restrictions Apply

TWO-BEDROOM RESIDENCE

In this 1055 sq ft. suite you will appreciate how every room of the place will allow you to experience a vacation like never before. This suite offers all the charm and unparalleled design that characterizes The Fives Downtown, has two bedrooms, the master bedroom is composed of a room with a king size bed, a full bathroom with luxurious finishes and double sinks, which is connected to a living room with elegantly furnished with a double sofa bed, dining room, a kitchen equipped with bar, refrigerator, coffee maker, stove and microwave, and a furnished balcony overlooking the city. The second bedroom has two queen size beds, a small balcony and a private bathroom with all amenities. This suite will take you to live moments that will remain engraved in your heart.

MAX OCCUPANCY: 8 PAX (MAX 6 ADULTS | MAX 2 CHILDREN)



TWO-BEDROOM WHIRPOOL RESIDENCE

Add a touch of indulgence to your vacation by staying in this room. In This 1055 sq ft. suite you will find a number of distinctive benefits of this group of rooms. Located on the top floor, this dreamy abode invites you to enjoy spectacular views of the Caribbean Sea from its spacious terrace with a private Jacuzzi, where you can take an invigorating dip as the horizon turns golden. In addition, this suite features a second bedroom with two queen size beds. Here, every detail is a promise fulfilled and every moment is a chapter of a superior experience.

MAX OCCUPANCY: 8 PAX (MAX 6 ADULTS | MAX 2 CHILDREN)

TWO-BEDROOM WHIRPOOL RESIDENCE

Add a touch of indulgence to your vacation by staying in this room. In This 1055 sq ft. suite you will find a number of distinctive benefits of this group of rooms. Located on the top floor, this dreamy abode invites you to enjoy spectacular views of the Caribbean Sea from its spacious terrace with a private Jacuzzi, where you can take an invigorating dip as the horizon turns golden. In addition, this suite features a second bedroom with two queen size beds. Here, every detail is a promise fulfilled and every moment is a chapter of a superior experience.

MAX OCCUPANCY: 8 PAX (MAX 6 ADULTS | MAX 2 CHILDREN)

