

# ROOM CATALOGUE

THE FIVES OCEANFRONT - PUERTO MORELOS

*The Fives*  
OCEANFRONT  
PUERTO MORELOS

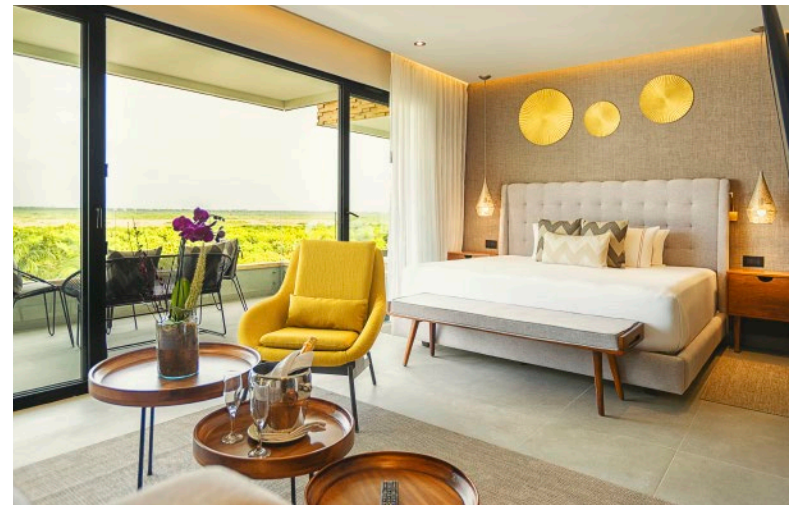
## SINGULAR ROOM

# JUNIOR SUITE

This 646 sq. ft. suite is characterized by its coziness, its design inspired by the Mexican Caribbean, using sand, gold, and wood colors, which will allow you to immediately feel the essence of the beautiful white sand beach and turquoise waters that are located in front of the hotel. This room will pamper you with an incomparable rest with two beds, a sofa bed in the living room. From its spectacular furnished balcony, you can enjoy the beautiful scenery of Puerto Morelos, which combines nature with the picturesque streets of this fishing village. It has a TV and a kitchen equipped with a stove, microwave, coffee maker, and refrigerator, it also has a bathroom with double sinks where you can take refreshing showers that will make you recharge lost energy.

**MAX OCCUPANCY: 4 PAX (MAX 4 ADULTS | MAX 3 CHILDREN)**

\*Restrictions Apply

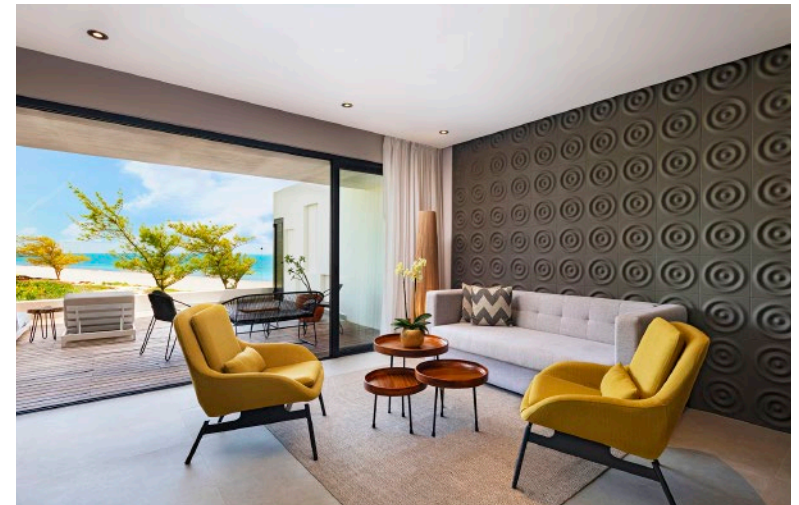


# ONE-BEDROOM PARTIAL OCEANVIEW RESIDENCE

Thanks to this beautiful 872 sq ft. suite, you will be able to enjoy a well-deserved rest. Its furnished balcony with a Jacuzzi tub will allow you to enjoy a partial view of the beautiful Caribbean Sea, the hotel's infinity pool, and the hotel's green gardens while relaxing in the comfort of its private lounge chairs. The interior of the suite is amazing with a double sofa bed, dining area, television, and a fully equipped kitchen with stove, microwave, coffee maker, and refrigerator. The bedroom will become your sanctuary, thanks to the elegant wooden doors that separate it from the living room, you will find the privacy you were looking for in its king-size bed. You will have direct access to the balcony and a bathroom with all the necessary amenities.

**MAX OCCUPANCY: 4 PAX (MAX 4 ADULTS | MAX 3 CHILDREN)**

\*Restrictions Apply



# ONE-BEDROOM OCEANVIEW RESIDENCE

This fantasy 872 sq ft. suite invites you to immerse yourself in an ocean of tranquility, where your bedroom becomes a sanctuary of rest thanks to its king-size bed. When you wake up, you can take a refreshing shower in the bathroom with all its amenities, including a spacious double sink. The living room is the place to meet and tell stories, with a double sofa bed, a dining area and a fully equipped kitchen with refrigerator, stove, microwave and coffee maker. But it is the private balcony that steals sighs, a fully furnished outdoor space where you will enjoy select ocean views, plus it has a jacuzzi tub.

**MAX OCCUPANCY: 4 PAX (MAX 4 ADULTS | MAX 3 CHILDREN)**

\*Restrictions Apply

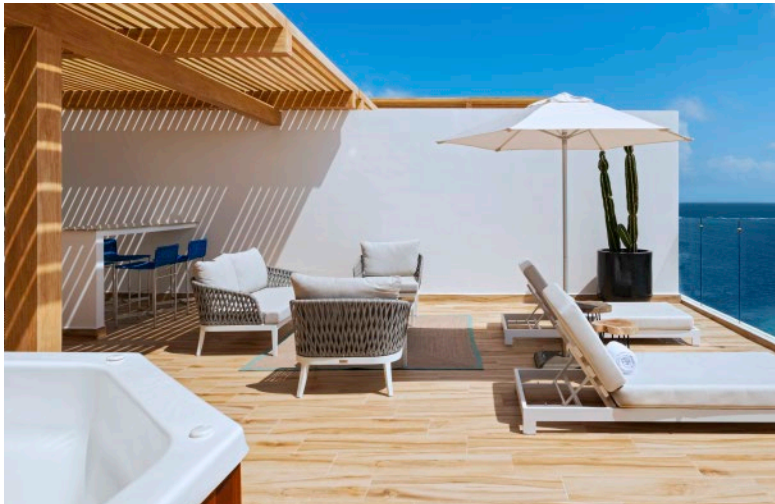
## ONE BEDROOM RESIDENCES

# ONE-BEDROOM PENTHOUSE RESIDENCE

Welcome to a chapter of luxury and splendor that redefines the limits of excellence. Inside this 1593 sq ft. refuge, elegance and comfort intertwine in a perfect dance, where you can enjoy all the comforts of the **ONE-BEDROOM PARTIAL OCEANVIEW RESIDENCE** with the great bonus of having a totally private rooftop where the true magic of the place unfolds. Here you will find a Jacuzzi that invites you to an ecstasy of relaxation, a barbecue that evokes the flavors of paradise, and a living room that reminds you that you deserve the best. Feel how the Caribbean Sea stretches out in front of you, creating a canvas that awakens dreams and passions.

**MAX OCCUPANCY: 4 PAX (MAX 4 ADULTS | MAX 3 CHILDREN)**

\*Restrictions Apply



THE FIVES OCEANFRONT - PUERTO MORELOS

## TWO BEDROOMS RESIDENCES



# TWO-BEDROOM OCEANVIEW RESIDENCE

By staying in this room of 1421 sq ft. you will be able to enter the warm embrace of this exquisite suite, where every corner will whisper to you the secrets of the Mexican Caribbean coast. Access all the features of a **ONE-BEDROOM PARTIAL OCEANVIEW RESIDENCE** while enjoying the palette of colors that dance in harmony before your eyes: the soft tones of the sand caressing your senses, the golden glow of the sun kissing the surface of the sea, and the wood that holds stories of sailors and dreams under the starry sky. This residence weaves a cozy spell with its second bedroom with two queen-size beds, a balcony, and a private bathroom. This suite will allow you to cherish moments that will live in your mind and heart for a lifetime.

**MAX OCCUPANCY: 8 PAX (MAX 6 ADULTS | MAX 7 CHILDREN)**

\*Restrictions Apply

## TWO-BEDROOM OCEANFRONT RESIDENCE

This category has one of its most enigmatic stays in this two-bedroom suite of 1421 sq ft. with oceanfront views that will take you to discover the enigmatic beach of white sand and sea with crystal clear water of this colorful fishing village. This residence has all the charms of a **TWO-BEDROOM OCEANVIEW RESIDENCE**, but with the possibility that your suite will be located right in front of the sea becoming the perfect setting to enjoy the beautiful scenery of Puerto Morelos, being in its opulent balcony you can feel that the world stops before you to give way to nature to expose its beautiful sunsets and sunrises turning them into a visual poem for your senses.

**MAX OCCUPANCY: 8 PAX (MAX 6 ADULTS | MAX 7 CHILDREN)**

\*Restrictions Apply



THE FIVES OCEANFRONT - PUERTO MORELOS



## TWO-BEDROOM PRESIDENTIAL PENTHOUSE RESIDENCE

As you take your first steps you will realize what a legendary experience you are about to live. This 3068 sq ft. suite has two bedrooms. The master bedroom has two large windows, a private furnished balcony, a king-size bed, and a bathroom with double sinks and marble tops. The second bedroom has 2 queen size beds, a private bathroom with all amenities, and a balcony. Its living room has a double sofa bed, a dining room, and a kitchen equipped with a stove, oven, microwave, refrigerator, coffee maker, and breakfast bar. From the oceanfront balcony with lounge chairs and sunbeds, you can enjoy the second-largest coral reef in the world. The private rooftop has an infinity pool, hot tub, lounge chairs, umbrellas, and barbecue.

**MAX OCCUPANCY: 8 PAX (MAX 6 ADULTS | MAX 7 CHILDREN)**

\*Restrictions Apply

# THREE-BEDROOM OCEANFRONT RESIDENCE

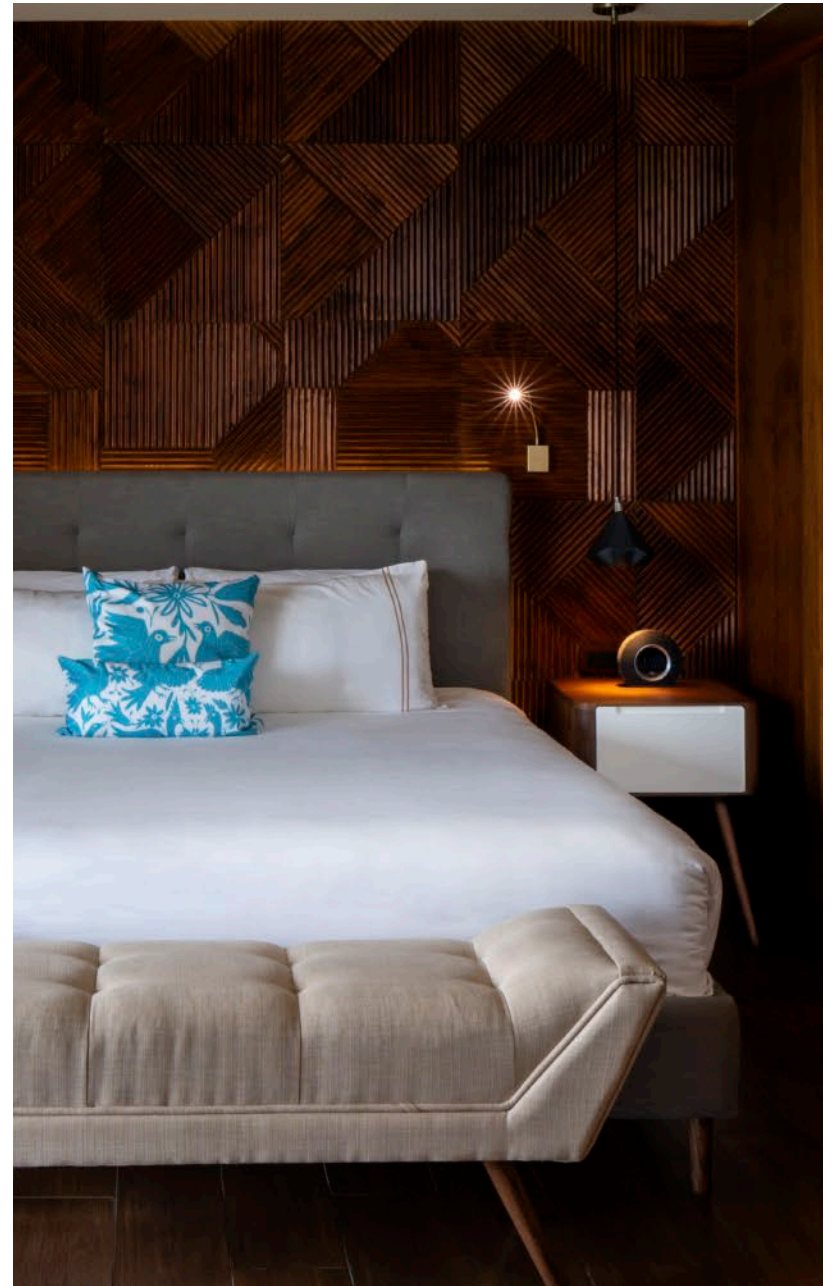
The purpose of this space is to welcome in maximum comfort large groups, large families and friends who share the quest for a journey imbued with sophistication. Every corner of this refuge exudes a sense of luxury and exclusivity. Every detail has been carefully conceived and every space has been designed to offer you absolute comfort. This 2303 sq ft. suite offers you exclusive benefits, in addition to all the features and amenities of a **TWO-BEDROOM OCEANVIEW RESIDENCE**, with the advantage of having a third extra room for more loved ones to accompany you. This third bedroom has 2 queen size beds, a bathroom with double sinks, and a spectacular balcony.

**MAX OCCUPANCY: 10 PAX (MAX 8 ADULTS | MAX 9 CHILDREN)**

\*Restrictions Apply



THE FIVES OCEANFRONT - PUERTO MORELOS



# THREE-BEDROOM PRESIDENTIAL PENTHOUSE RESIDENCE

This 5360 sq ft. suite becomes a melody of magical moments with an amazing private rooftop terrace decorated with an infinity pool that merges with the sea, where you can also relax in its whirlpool tub. In the lower part you can have all the amenities of the **TWO BEDROOM PRESIDENTIAL RESIDENCE**, elegance, finishes, privacy, and comfort will accompany you at all times, however, the space will grow considerably because in this suite you can have a third room fully equipped with a private cloth with all amenities, two queen size beds and a balcony that becomes a door that will take you to the Eden of the Caribbean Sea.

**MAX OCCUPANCY: 10 PAX (MAX 8 ADULTS | MAX 9 CHILDREN)**

\*Restrictions Apply

