



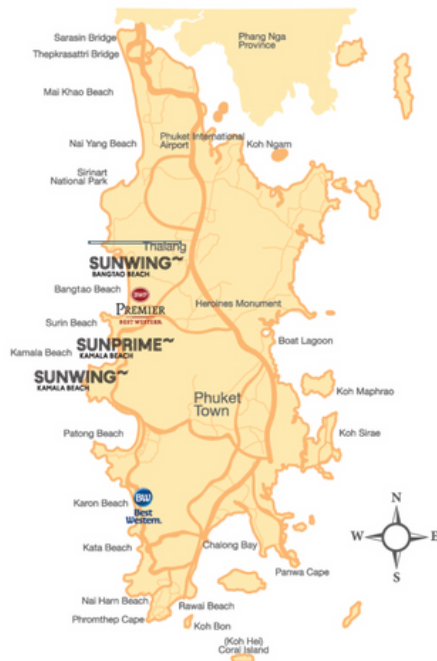
Opening Date: 2006    Renovation Date: 2021    280 Rooms



## Meeting Room

Size: 226 sq.m.  
Dimension: 11.30x20 m.  
Ceiling Height: 4 m.

I-shape	30 persons
U-shape	40 persons
Classroom	100 persons
Banquet	150 persons
Theater	160 persons
Cocktail	180 persons



## Attractions/Other Destinations

Bangtao Beach	0 km
Shops	1 km
Lotus Express	1 km
Public Transport	1 km
Laguna Phuket Golf Club	3.2 km
Patong Beach	18 km
Airport	24 km
Phuket Town	25 km

Photos: [www.flickr.com/photos/sunwing-bangtao/albums/72157719390284544](http://www.flickr.com/photos/sunwing-bangtao/albums/72157719390284544)



22 Moo 2, Cheung Thalay, Thalang, Phuket 83110 - Thailand

Tel: +66 76 337400

Fax: +66 76 337407

Email: [info@sunwingphuket.com](mailto:info@sunwingphuket.com)

Web: [www.sunwingphuket.com](http://www.sunwingphuket.com)



The Ultimate Upscale Family Resort in Thailand

## Facilities & Services

- 4 Outdoor Pools
- 2 Outdoor Children's Pools
- Outdoor Jacuzzi
- 1 Swim-up Pool Bar
- 1 Water Slide
- 2 Bars
- 2 Restaurants
- Air-Conditioned Lobby
- 24 Hour Reception
- 3 Elevators
- Meeting Room
- Fitness Room
- Outdoor Massage
- Baby Sitting Service
- Table Tennis
- Pool Tables
- Pétanque
- Fully Licensed Clinic
- Luggage Room
- Laundry Service
- Self-Service Laundry Facilities
- Wi-Fi (complimentary)
- Motorbike Rental
- Taxi Service
- Car Park
- Room Service
- ATM

## Water Sports Facilities (chargeable)

- Windsurf
- Canoe
- Kayak
- Diving Equipment
- Snorkeling

## Kid's Club

- Lollo & Bernie Club
- Teen Lounge

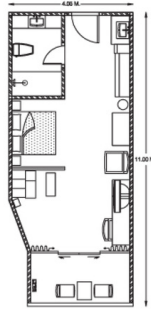
## Accommodation

No matter the size, shape or configuration of your family, from a compact party of two to an entire tribe of loved ones, over 280 studios and family suites of **Sunwing Bangtao Beach** will ensure the utmost comfort and luxury for one and all.

All rooms are equipped with air-conditioning, hot & cold water, shower, satellite TV, movie channel, hair dryer, working desk, sofa bed, big size fridge, safety box, coffee/tea making facilities, microwave oven, light kitchen equipment but no stove, bathrobes, internet connection data port and private oversized balcony or terrace overlooking the fragrant gardens or pools or Andaman sea.

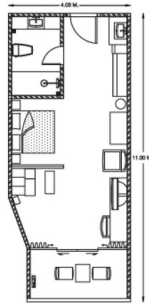
### Studio

**181 Rooms**  
**Room Size 44.5 sq.m.**  
 Our most common category with combined living room and bedroom.



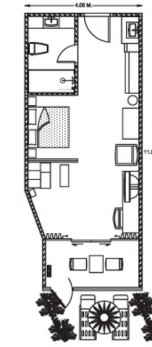
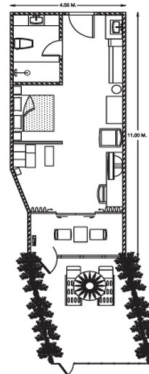
### Royal Studio

**58 Rooms**  
**Room Size 44.5 sq.m.**  
 Same features as Studio with better location among all rooms. Additional amenities include: Dux bed mattress, toaster, lovely Hans Grohe "rain man" shower, two sun chairs on the balcony/terrace, cosmetic mirror, iron & iron board, bathrobes for the whole family. On arrival a fruit basket, snacks, wine, beer, water and soft drinks will be waiting.



### Happy Baby Studio

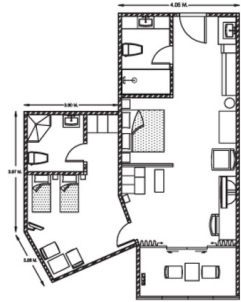
**9 Rooms**  
**Room Size 44.5 sq.m.**  
 These are Studios that are specially designed for families with babies. The rooms are always at the ground level with an enclosed terrace and gate that can be locked. Additional amenities include: baby cot, baby high chair, stroller, nursing mat, baby resting chair, Bumbo baby sitter, children's crockery and cutlery, baby bathtub, non-slippery bath mat, stool in bathroom, plastic potty, hygienic diaper bin, safety drawer locks and sunbeds and parasol at the gated garden terrace.



## Royal Studio Pool Access

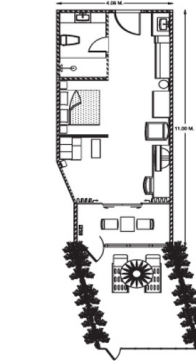
**9 Rooms**  
**Room Size 44.5 sq.m.**

The rooms are located on ground floor with private access to the pool, equipped with special additional amenities such as Dux bed mattress, toaster, two sun chairs on terrace, cosmetic mirror and iron & iron board. The rooms have bathrobes for the whole family. On arrival, a fruit basket, snacks, wine, beer, water and soft drinks will be waiting.



## Family Suite

**20 Rooms**  
**Room Size 69.5 sq.m.**  
 2-bedroom type with 2-bathrooms, specially designed for medium-sized families.



## Lollo & Bernie Suite

**3 Rooms**  
**Room Size 44.5 sq.m.**

The specially designed suite with a large lovely terrace with dining area, sun loungers and sofa. In addition, we have filled the suite with games and toys as well as welcome drinks, fruits and snacks.

### Room Configuration and Extra Person Charge Policy

- All rooms are equipped with L-shape Sofa bed for Studio Room, Royal Studio, Happy Baby Studio and Royal Studio Pool Access.
- For 2 bedrooms (Family Suite) 1 Sofa bed convertible to 2 beds.
- Maximum occupancy 2 adults and 2 teens/children sharing in Studio Room (Extra person charge applies to 1st and 2nd teen).
- Maximum occupancy 4 adults and 2 teens/children sharing in Family Suite (Extra person charge applies to 3rd and 4th adult).
- Maximum of 2 adults and 2 teens/children sharing in Family Suite without extra charge.
- Maximum of 2 adults and 2 childrens sharing in Studio Room without extra charge.
- For infant, 1 baby cot will be provided free of charge. (infant: under 3 years old) - Subject to availability
- Child always eats free when dining with paying adults. Food has to be ordered from Lollo & Bernie menu only.

